



## GENESYS™ INTEGRATED DISPLAY UNITS (IDU)

ELECTRONIC FLIGHT INSTRUMENT SYSTEM FOR FIXED-WING & ROTARY-WING AIRCRAFT

# SUPERIOR SITUATIONAL AWARENESS, REDUCED WORKLOAD, AND GREATER COMMAND AND CONTROL

## INTEGRATED DISPLAY UNITS (IDU)

The Genesys 3D Synthetic Vision EFIS delivers the new standard in fixed-wing and rotary-wing avionics. In one intuitive system, it integrates a number of breakthroughs:

- 3D Synthetic Vision (SVS)
- Highway-In-The-Sky (HITS) navigation
- Geo-referenced Hover Vector
- Fixed-Wing TAWS / Rotary-Wing HTAWS
- Graphical Flight Management System (FMS)
- And much more

Not only is the 3D Synthetic Vision EFIS the world's lightest and most comprehensive integrated Electronic Flight Instrument System, it's the only one STC'd in four-classes of aircraft—Part 23, Part 25, Part 27, and Part 29—and the only one available as factory-standard on a production rotary-wing aircraft.

- Full-color, hi-rez, sunlight-readable (1,000 nit) LCD screen with fully-adjustable brightness
- Dual, redundant backlight
- Input: AHRS, ADC, GPS receiver (all included)
- Integral HTAWS and FMS
- DO-178B, Level-A Software
- NVIS-A and NVIS-B Night Vision Goggle compatibility
- Digital flight performance recording of last five flights
- Redundant display/sensor architecture
- RNP 0.3/BRNAV/PRNAV-compliant
- Engine display and master caution system options
- Certified with most existing autopilots
- 55°C to +75°C operating range
- Non-ITAR

## FULLY DIGITAL

100% digital, open architecture enables flexible, aircraft-independent installation in both fixed wing and rotary-wing airframes. It also delivers the ultimate in precision and increased reliability for higher dispatch rates and higher mission completion. Finally, reduced box count and lighter system weight means more payload capacity for passengers and/or cargo.

## FUTURE PROOF

The Genesys 3D Synthetic Vision EFIS is field-upgradeable so you can easily add new functionality and grow capabilities without replacing hardware components.



IDU-680 provides a 6" x 8" portrait display and weighs just 9.5 lbs.



IDU-450 provides a 5" x 4" landscape display and weighs just 4.5 lbs.

## CONFORMAL 3D SYNTHETIC VISION SYSTEM (SVS)

The first FAA-certified avionics system to show 3-dimensional terrain, obstacles, and traffic in real time on Primary Flight Display (PFD)

## HOVER VECTOR (ROTORCRAFT)

When groundspeed drops below 30 knots, the Flight Path Marker on the Primary Flight Display converts to a "bull's-eye" ringed by concentric circles that delineate 15- and 30-knot ground speeds

Enhances productivity and control during surveillance, long-line work, and other precision procedures

Geo-reference Hover Vector allows precision hover relative to designated targets

## TAWS/HTAWS

- TSO-C151 TAWS
- SO-C194 HTAWS and Enhanced HTAWS
- Visual/audio cues when terrain or obstacles present a hazard, configurable filters minimize nuisance alerts
- Forward-Looking Terrain Alerts
- Excessive Closure to Terrain
- Excessive Rate of Descent
- Sink Rate after Takeoff or on Missed Approach
- Flight Into Terrain When Not Properly Configured for Landing

## HIGHWAY-IN-THE-SKY (HITS)

- Pilot flies through a series of green boxes superimposed over the flowing terrain of the 3D Synthetic Vision
- ILS precision to any point in the world

## GRAPHICAL FLIGHT MANAGEMENT SYSTEM (FMS)

- Integrated GPS with graphical mission planning, head-up implementation on the PFD
- Fully integrated into the EFIS to eliminate extra components—maximizing valuable panel space and conserving critical weight
- Supports all ARINC-424 leg types and VNAV planning, and enables user-definable approaches and special-use airspace

## MAP PLANNING

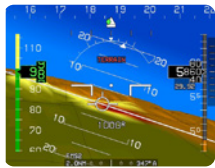
Map planning available with software version 7.0E and later editions

## GREATER PRODUCTIVITY AND SAFETY IN REAL-WORLD SITUATIONS

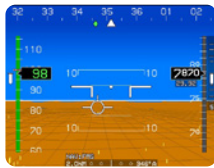
Highway-In-The-Sky navigation allows pilots to fly with ILS precision to any point in the world. The HITS route appears on the PFD as a series of boxes superimposed over the flowing terrain of the 3D Synthetic Vision. The pilot simply flies through the boxes to follow the HITS route. The applications are endless. For example, an air ambulance crew can easily define a noise abatement pattern, and then precisely fly that corridor each and every mission—accurate to within less than one meter.

# DISPLAY MODES

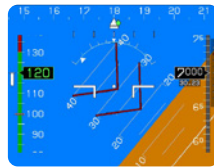
## Primary Flight Display Modes



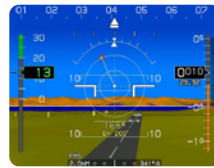
PFD with Terrain



Basic PFD



Unusual Attitude Recovery



Hover Vector



Round Dials

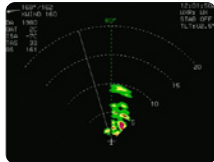


SVS & HITS

## Multi-Function Display Modes



Moving Map with Terrain



Radar



Graphical Flight Planner



EHSI



FLIR/LIVE VIDEO



ARMS



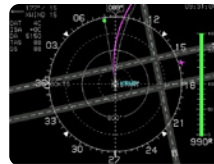
Datalink Weather, FIS-B



Traffic



Lightning



Georeferenced Hover Vector



EICAS



Customizable Synoptics

### Integrated Display Unit (IDU)

- Full-color, high-resolution, sunlight-readable (1,000 nit) LCD screen with fully adjustable brightness
- Black-anodized machined 6061-T6 aluminum bezel
- Integrated voice warning system
- Illuminated controls with tactile differentiation
- Recursively redundant system architecture
- Digital flight performance recording for last 5 flights
- Upgradeable and expandable
- Level-A software
- Ruggedized for demanding cockpit environments

### ADAHRS (Air Data Computer & Attitude/Heading Reference Systems)

- Solid-state, strap-down AHRS
- 13,000 hours MTBF
- Non-tumbling, non-precessing
- Multiple AHRS configurations available
- Level-A Software
- Includes OAT probe
- Multiple ADC configurations available

### GPS-WAAS Receiver

- 15-channel, parallel tracking
- RAIM and FDE

### AIU-2 (Analog Interface Unit)

- Drives virtually any autopilot
- Roll-steering for virtually hands-free flying: DP's, STAR's approaches (including DME arcs, procedure turns, and teardrop and holding pattern course reversals) and missed approaches (including holding patterns with correct entries)
- Interfaces dual analog VOR/LOC/GS, MB, ADF, Radar Altimeter

### Primary Flight Display (PFD)

- HUD symbology
- 3D Conformal Synthetic Vision
- Highway-In-The-Sky navigation
- Real-time 3D terrain modeling
- Real-time 3D traffic display
- Real-time 3D towers, antennas, and obstructions
- Full VNAV capability
- Zoom/wide-angle views
- Fully integrated FMS supports all ARINC-424 leg types
- Unusual Attitude Recovery mode
- Multiple declutter options
- ASI, ALT, VSI, AGL, trends, heading, timers, bugs, and more
- Radar Altitude display
- Turn indicator
- G-meter with tattletales

### Multi-Function Display (MFD)

- Vector-based moving map with Jeppesen NavData
- Topographic terrain display
- Datalink weather display
- Class A / B / C Terrain Awareness and Warning System (TAWS & HTAWS)
- TCAS-I, -II, TAS, ADS-B display
- Winds aloft / crosswind component
- Density altitude display
- ISA/Temperature
- True airspeed, groundspeed, and OAT
- Conventional HSI/ILS/RMI/ADF display
- Towers, antennas, and obstructions
- Color- and altitude-coded airspace
- Horizontal Projected Path with "look-ahead" in turns
- Waypoint information
- Multiple display options
- Multiple declutter options
- Fuel range and duration
- Built-in, graphical Flight Management System (FMS) flight planner

### Certification Basis

- STC'd on Part 27 and Part 29 helicopters
- STC'd on over 740 Part 23 and Part 25 fixed wing aircraft
- TSO-C2d, TSO-C4c, TSO-C6d, TSO-C8d, TSO-C10b, TSO-C106, TSO-C110a, TSO-C113, TSO-C145/146, TSO-C151b, TSO-C194, TSO-C34e, TSO-C35d, TSO-C36e, TSO-C40c, TSO-C41d, TSO-C52b, TSO-C87, RTCA/DO-160D, RTCA/DO-178B, Level-A



**MOOG** | Shaping the way our world moves™

+1.817.215.7600  
Genesys-Aerosystems.com



The appearance of U.S. Department of Defense (DoD) visual information does not imply or constitute DoD endorsement.

© 2025 a Moog company. All rights reserved.  
Product and company names listed are trademarks or trade names of their respective companies.

Form 500-1457 0225